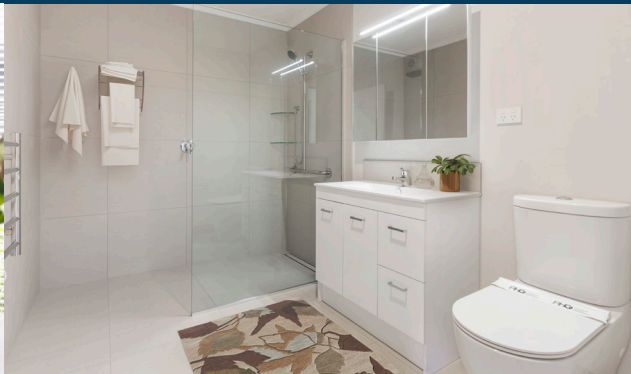




Images are for illustrative purposes only. Final construction design may vary.



Juniper

*PRICE:

UNIT:

DATE: / /

Juniper

2 BEDROOM OPTION | DUPLEX



120.7m²
Approx



Ensuite &
bathroom



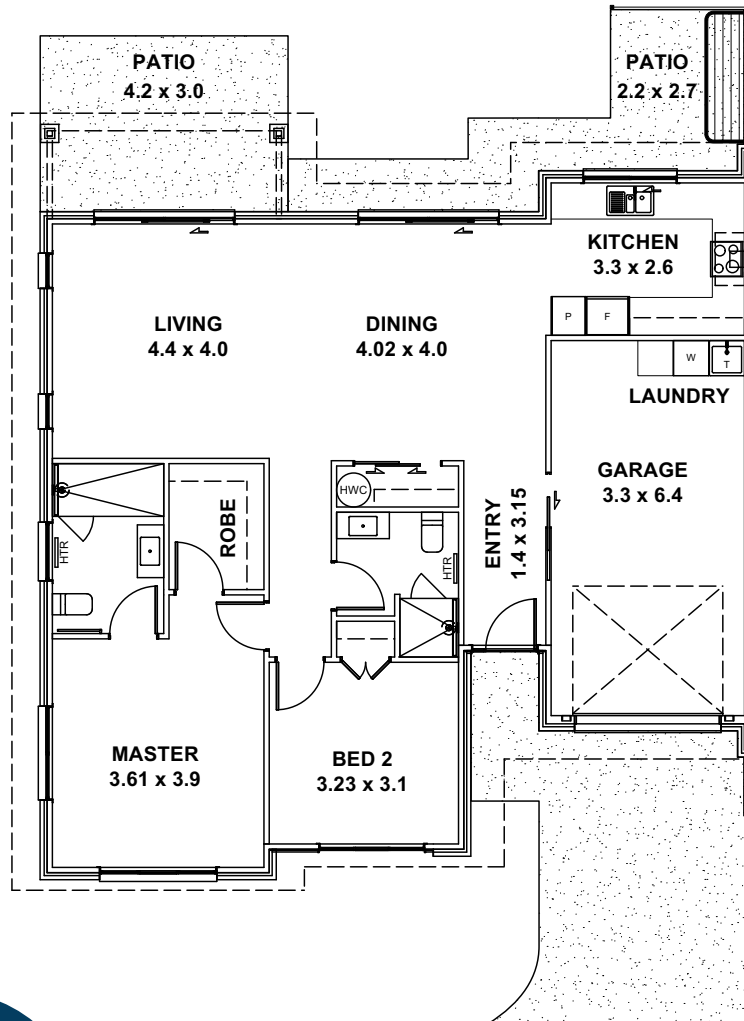
2



1



1



Juniper defines duplex living at its finest. With elegant large windows and a private north-facing patio, it's the epitome of comfort.

- Open plan living with seamless indoor/outdoor flow
- Modern kitchen designed for easy entertaining
- Convenient level entry to the alfresco dining area, providing easy access for outdoor enjoyment and relaxation.
- Spacious master bedroom featuring a walk-in wardrobe
- Ensuite bathroom with a modern, level entry shower for accessibility
- Separate second/guest bathroom
- Linen cupboard provided for extra storage space
- North-facing orientation for optimal natural light and warmth
- Internal garage access for security and convenience

If you still have any questions or require further explanation, please phone **0800 527 252** or Sales on **027 473 5768**

Developed and managed by Karaka Pines Villages LP.

www.karakapines.co.nz

Karaka Pines Rototuna is a registered village under the Retirement Villages Act 2003.

**The price displayed on this document is current as of the date provided, but it is subject to change due to market fluctuations, material costs, and other factors. We cannot guarantee this price at a later date. For the most up-to-date pricing and availability, please contact our sales team. This document is for informational purposes and does not constitute a binding agreement. Karaka Pines Villages reserves the right to make pricing and specification adjustments without prior notice.*

