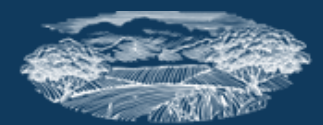




JUNIPER



**WOODCROFT**  
E S T A T E  
— ROLLESTON —

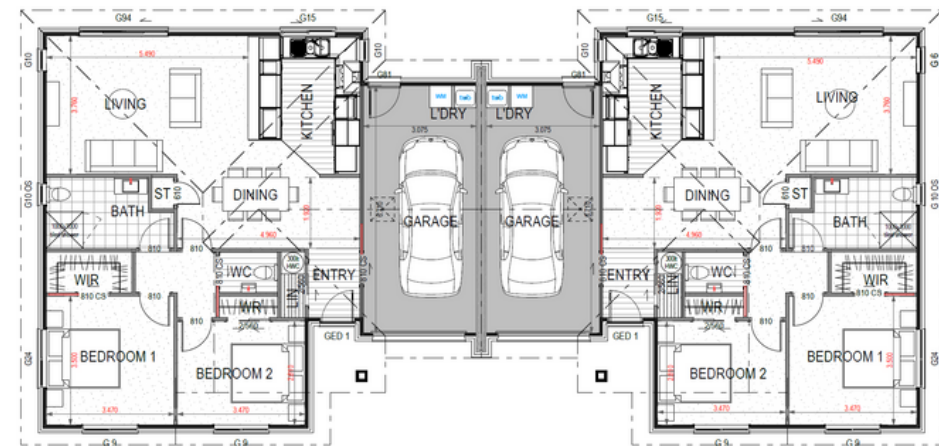
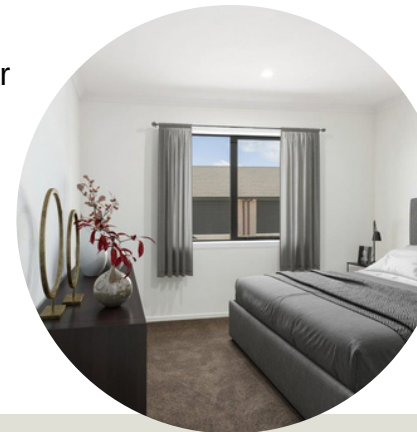


# JUNIPER

 111m<sup>2</sup>
 2
  1
  1
  1

Our Juniper plan provides you with all of modern design essentials to make living easy:

- Open plan living with outdoor flow
- Modern kitchen for easy entertaining with a breakfast bar
- Level entry to the outside patio
- Master bedroom with walk-in wardrobe
- Spacious bathroom with modern level entry tiled shower
- Additional guest WC
- 1 x Guest bedroom with built in wardrobe
- Linen cupboard for extra storage
- Single garage with internal entry and laundry.



*DISCLAIMER: Please refer to the architectural plans as these are a guide only and subject to change*

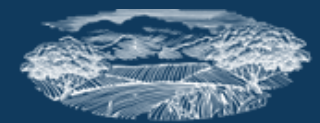
DATE:

PRICE:

VILLA:



[www.woodcroftestate.co.nz](http://www.woodcroftestate.co.nz) | Corinne Blackie 03 421 7796 or 021 292 1141  
[sales@woodcroftestate.co.nz](mailto:sales@woodcroftestate.co.nz)



**WOODCROFT**  
ESTATE  
ROLLESTON